

# TrueVIEW™

## Autofluorescence Quenching Kit

### Dramatically Reduce Tissue Autofluorescence

#### Reveal true immunofluorescence – even in challenging tissues

TrueVIEW Autofluorescence Quenching Kit provides a novel way to remove unwanted fluorescence in tissue sections due to aldehyde fixation, red blood cells, and structural elements such as collagen and elastin. This unique formulation binds and effectively quenches the autofluorescent elements in even the most problematic tissues, such as kidney, spleen and pancreas.

The use of TrueVIEW Quenching reagent leads to significant enhancement in overall signal-to-noise in most immunofluorescence assays.

#### Unmatched effectiveness

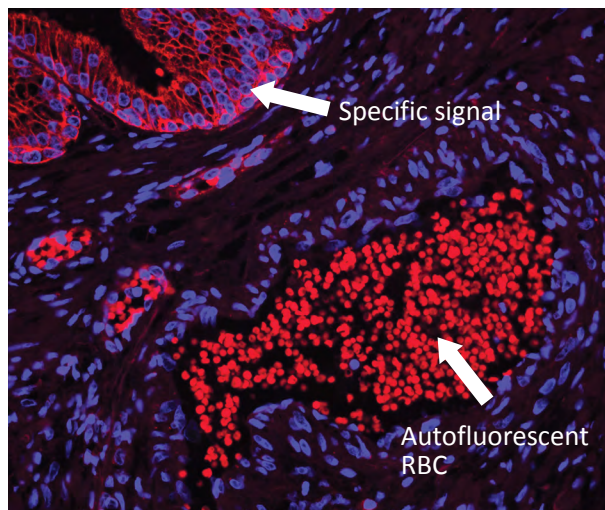
Most methods for reduction of tissue autofluorescence act primarily on lipofuscin granules, and are not broadly effective against the most common sources of autofluorescence targeted by TrueVIEW Quenching Reagent.

TrueVIEW Quenching reagent is a unique approach to diminish unwanted autofluorescence from non-lipofuscin sources, that retains the specific fluorescent antigen staining. The quenching action of the kit reagents therefore, provides the investigator with a clear, unambiguous, “true view” visualization of the intended target.

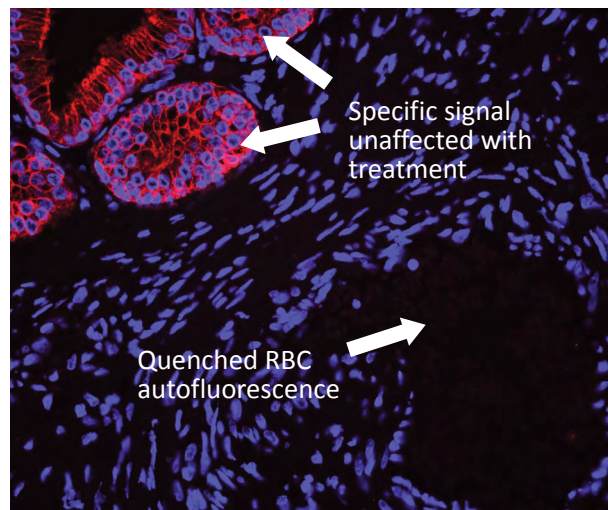
#### Why TrueVIEW Quencher?

- Specific reduction of autofluorescence from aldehyde fixation
- Improved signal-to-noise ratio
- Effective in even the most challenging tissues
- 5 minute incubation
- Broad fluorophore compatibility
- Compatible with standard epifluorescence and confocal laser microscopes
- Antifade mounting medium included (choice of with or without DAPI counterstain)

#### WITHOUT Treatment



#### WITH TrueVIEW Quencher



Human Prostate: FFPE serial sections stained for epithelium (red) with DAPI counterstain (blue). Note the complete absence of red blood cell fluorescence and the retention of specific epithelial staining in the treated section (right).

*Patent pending formulation.*

[vectorlabs.com](http://vectorlabs.com)

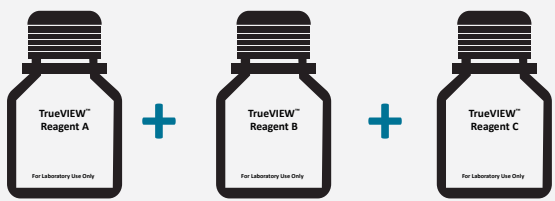
 **VECTOR**  
LABORATORIES  
part of Maravai LifeSciences

# TrueVIEW™ Autofluorescence Quenching

## Easy to Apply

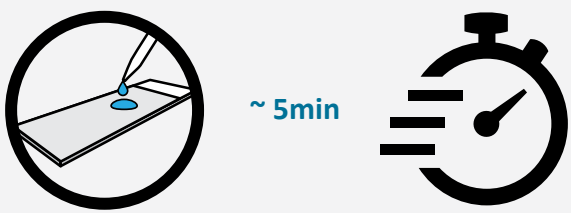
Following completion of the IF staining procedure:

**Step 1** **Mix reagents**  
1 : 1 : 1 ratio for desired volume




TrueVIEW™ Reagent A + TrueVIEW™ Reagent B + TrueVIEW™ Reagent C

**Step 2** **Apply working solution**



~ 5min

**Step 3** **Coverslip and visualize**  
Optimized for use with VECTASHIELD Vibrance™ Antifade Mounting Medium



## Kit Components

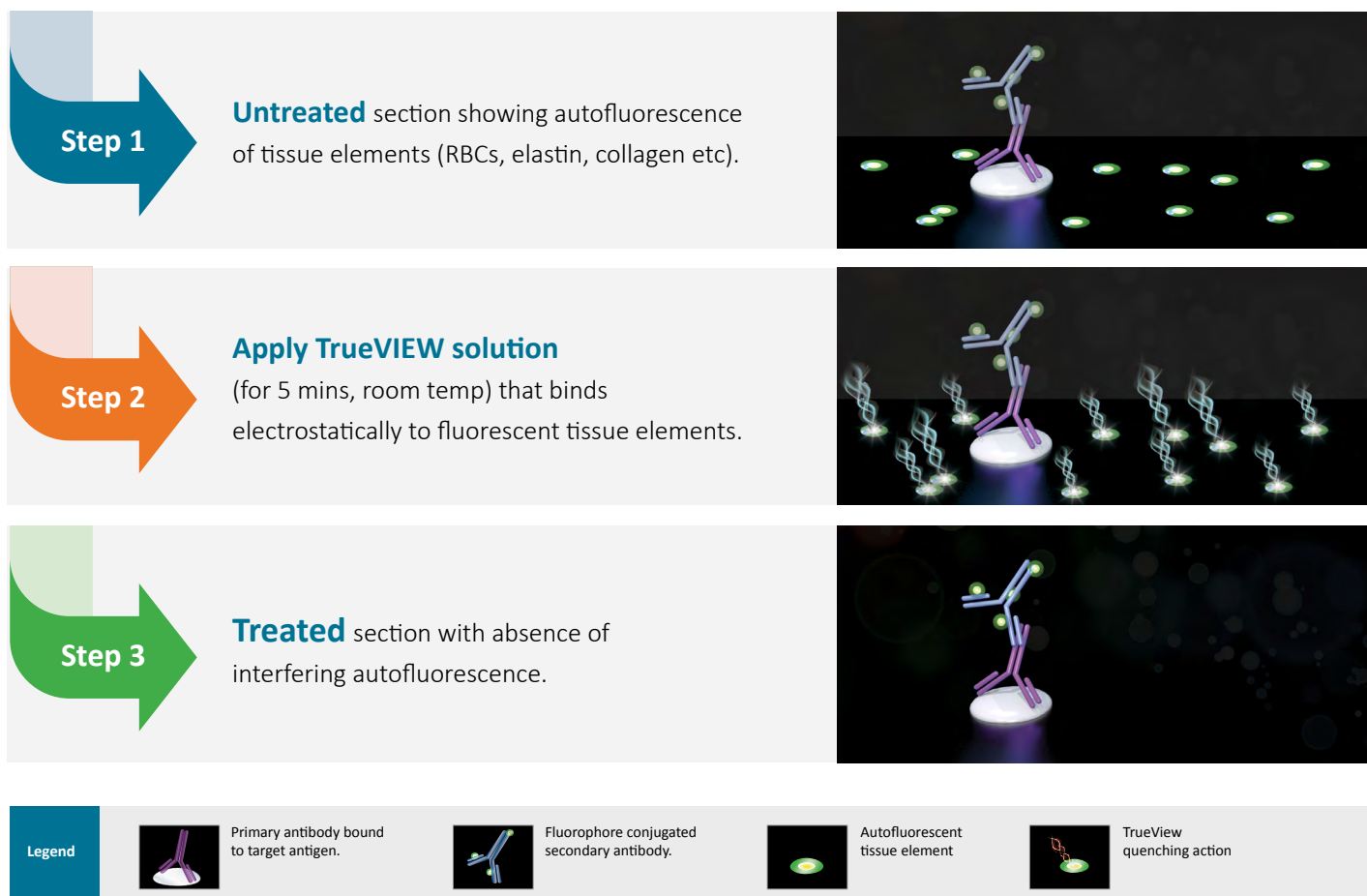
TrueVIEW Autofluorescence Quenching Kit	Unit Size
TrueVIEW Reagent A	5 ml
TrueVIEW Reagent B	5 ml
TrueVIEW Reagent C	5 ml
VECTASHIELD Vibrance Antifade Mounting Medium (with or without DAPI counterstain)	2 ml



- One kit is sufficient to treat ~ **100 to 150** sections.
- Stable for **several hours** once made

## Mode of Action

After completion of detection IF procedure:



## Compatible with Popular Fluorophores

- Alexa Fluor® 488, 594 & 647
- DyLight® 488, 594 & 649
- Fluorescein (FITC), Cyanine 3 (Cy®3), Cyanine 5 (Cy®5)
- Green Fluorescent Protein (GFP)

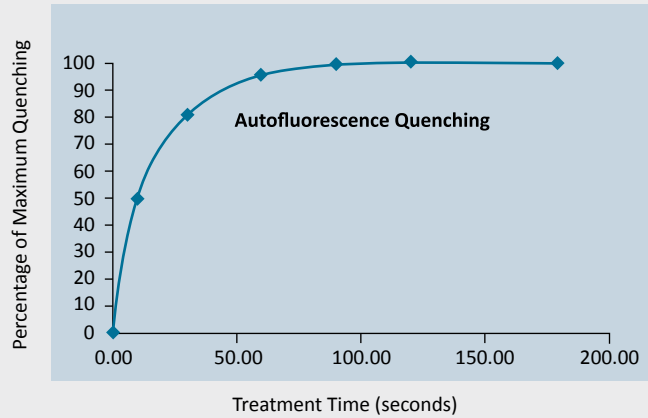
Effective across visible & far red spectrum



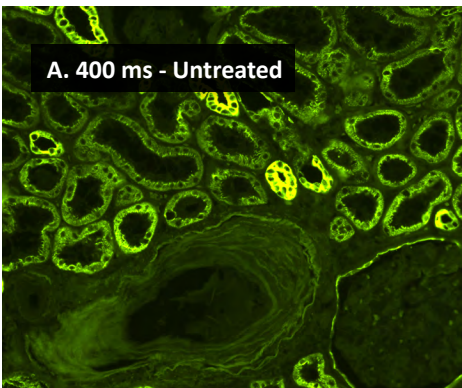
## Rapid Quenching Effect

Quenching of human kidney section autofluorescence at time points after TrueVIEW Treatment.

**Note:** Maximum quenching of autofluorescence is achieved within 2 minutes of application.



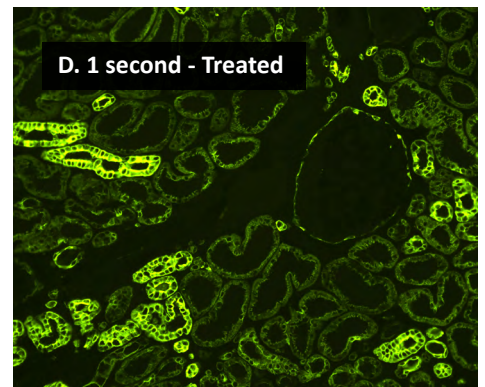
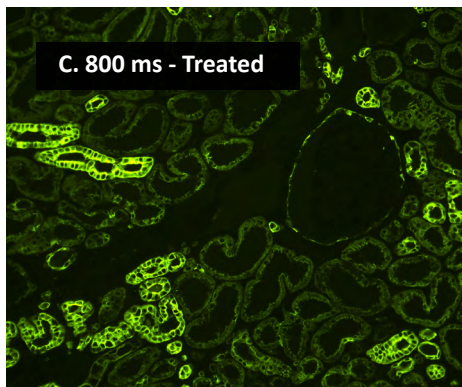
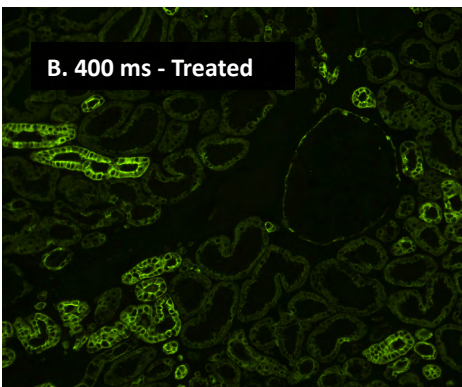
## Significant improvement in signal-to-noise ratio



Antigen retrieved human kidney sections (FFPE), stained for cytokeratin using anti-AE1/AE3 antibody (green). **Images A-D.**

Without treatment (**A**).  
With TrueVIEW Quencher (**B-D**).

Exposure times were lengthened to increase signal intensity.

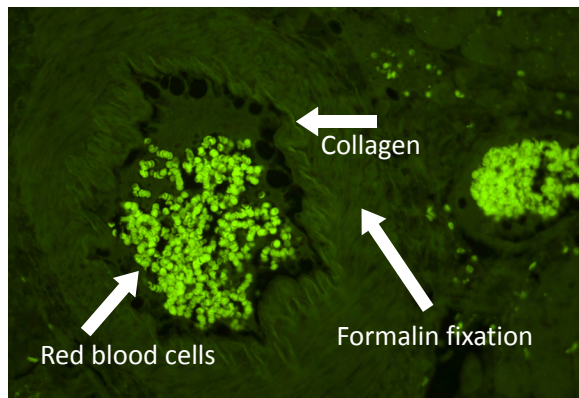


Increasing camera exposure time

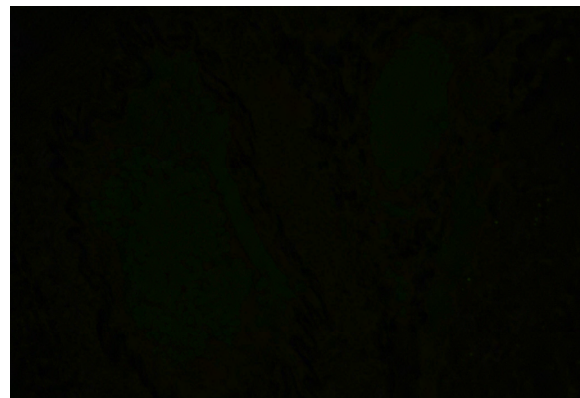
# Comparison between TrueVIEW reagent and other autofluorescence reducing agents

We compared the effectiveness of TrueVIEW quenching action in parallel with other commercially available autofluorescence reducing products and “home brew” reagents, on serial sections of formalin-fixed, paraffin embedded human pancreas visualized using a standard fluorescein (green) filter. No specific immunofluorescence staining was conducted. The images below highlight our results. All images were acquired under identical conditions (including microscope objective and exposure times).

## No Treatment (Endogenous autofluorescence)

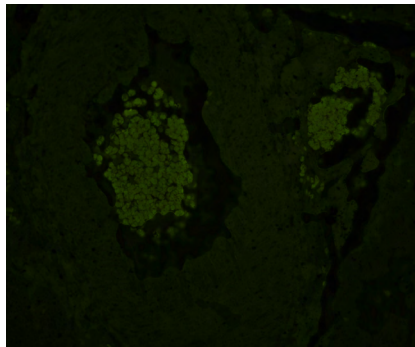


## TrueVIEW Quencher Treated

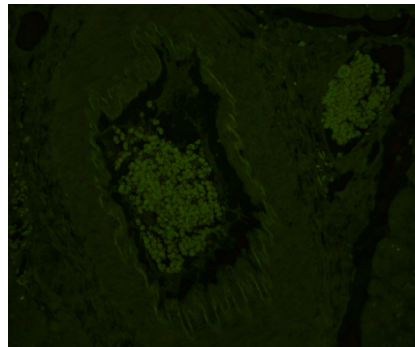


## Competitor and other autofluorescence treatments

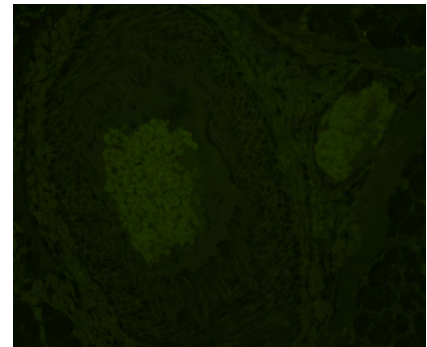
Company A



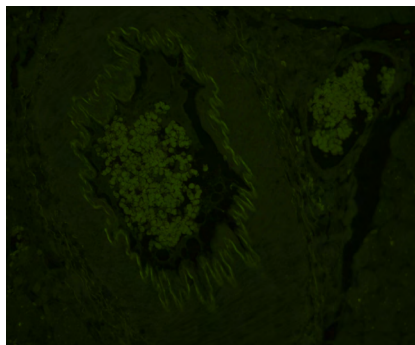
Company B



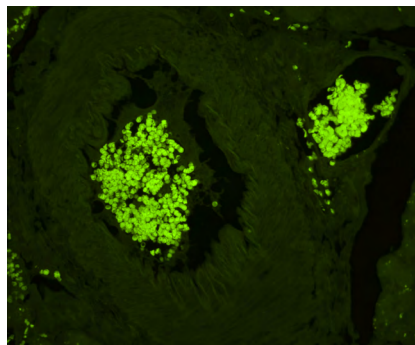
Company C



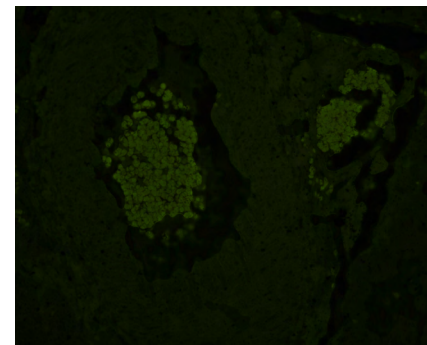
Copper Sulfate Solution



Sodium Borohydride



Sudan Black B



# Customer Testimonials and Ordering Information

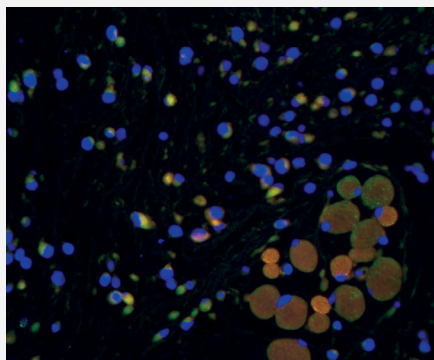


**Dr. Kaitlyn Sadtler**  
Postdoctoral Fellow  
MIT, Boston Children's Hospital

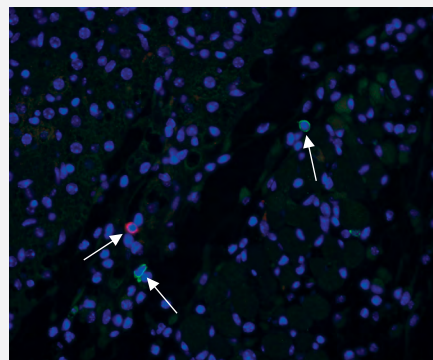
*"I would definitely use this reagent in the future — it is quick and reliable on multiple tissue types."*

— Dr. K. Sadtler

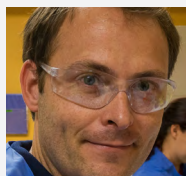
WITHOUT Treatment



WITH TrueVIEW Quencher



Adjacent mouse skin tissue sections (FFPE) double stained using primary antibodies against CD3 (Pan T cell marker) and B220 (CD45R) antigens with a DAPI (blue) counterstain. Note: interfering background autofluorescence on section without treatment (left image), and essentially total elimination of autofluorescence following treatment with TrueVIEW Quenching Reagent (right image). The arrows on the right image show the "true" actual antigen staining. Courtesy of Dr. Sadtler.



**Brian Tabb, MS, HTL, QIHC**  
Immunohistochemistry Scientist  
Alizee Pathology

*"I tested it after using a tyramide fluorescent detection kit (555) and also tested it with GFP expression models while also comparing this kit to a competitor's quenching solution. The TrueVIEW definitely decreased autofluorescence more than the competition while seeming to have no effect on GFP signal."*

— Brian Tabb, MS, HTL, QIHC

## Ordering Information

Product	Unit Size	Catalog Number
TrueVIEW Autofluorescence Quenching Kit	Kit	SP-8400
TrueVIEW Autofluorescence Quenching Kit with DAPI	Kit	SP-8500
VECTASHIELD Vibrance Antifade Mounting Medium (No Counterstain)	2 ml, 10 ml	H-1700
VECTASHIELD Vibrance with DAPI Antifade Mounting Medium	2 ml, 10 ml	H-1800

TrueVIEW, VECTASHIELD and Vibrance are trademarks of Vector Laboratories.  
All other trademarks cited herein are the property of their respective owners.

©2019 Vector Laboratories. All rights reserved.  
For research use only. Not intended for animal or human therapeutic or diagnostic use.

[vectorlabs.com](http://vectorlabs.com)



Distributed by Abacus dx

1800 ABACUS (AUS) 0800 222 170 (NZ) | [info@abacusdx.com](mailto:info@abacusdx.com) | [www.abacusdx.com](http://www.abacusdx.com)

abacus dx